

SHOJI | SCONCE

Fixture Description:

Our simple and elegant Shoji Daikon wall sconce is suited to smaller spaces and those in need of subtle illumination. This Shoji is lovely hanging solo on a wall or in multiples in a passage where more light or action is needed.

Materials:

Industrial mild steel, brass, stainless steel

Finishes:

Industrial clear, onyx black wax, satin black, matte white, brushed brass, polished brass, naval brass, white graphite, brushed stainless, polished stainless

Specifications:

Weight: 5 lbs

Length: 19"

Width: 4.75"

Depth: 1.5"

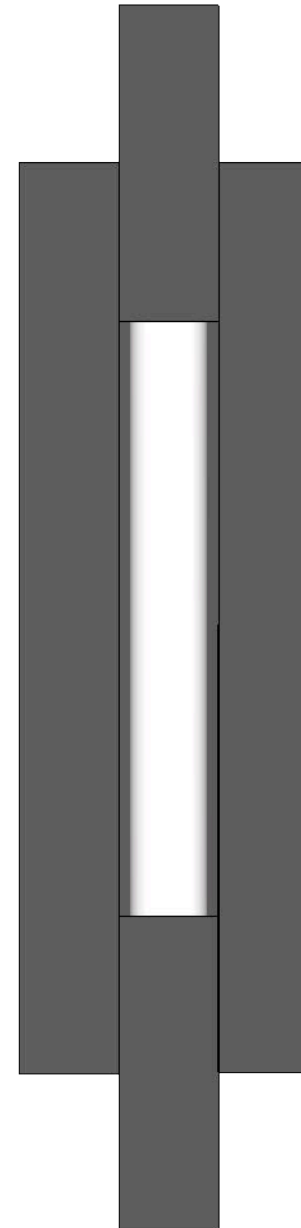
LED illumination:

Socket: E26

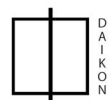
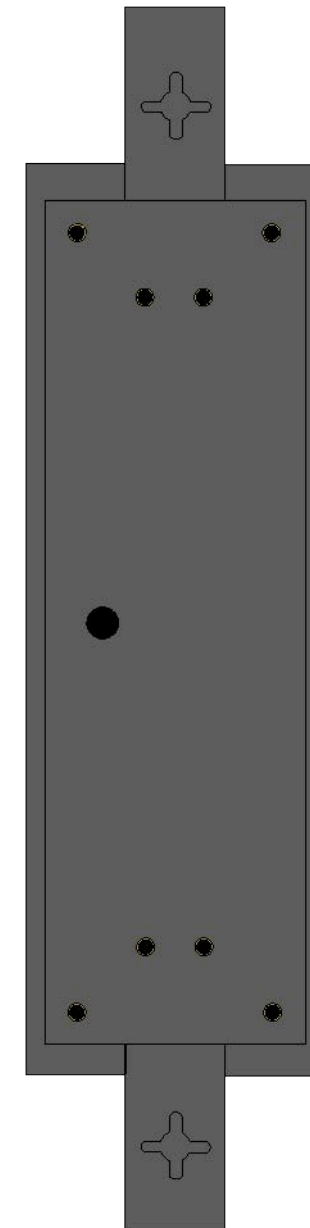
Bulb: 300 mm T9/T30

Wattage: 3 W

FRONT



BACK

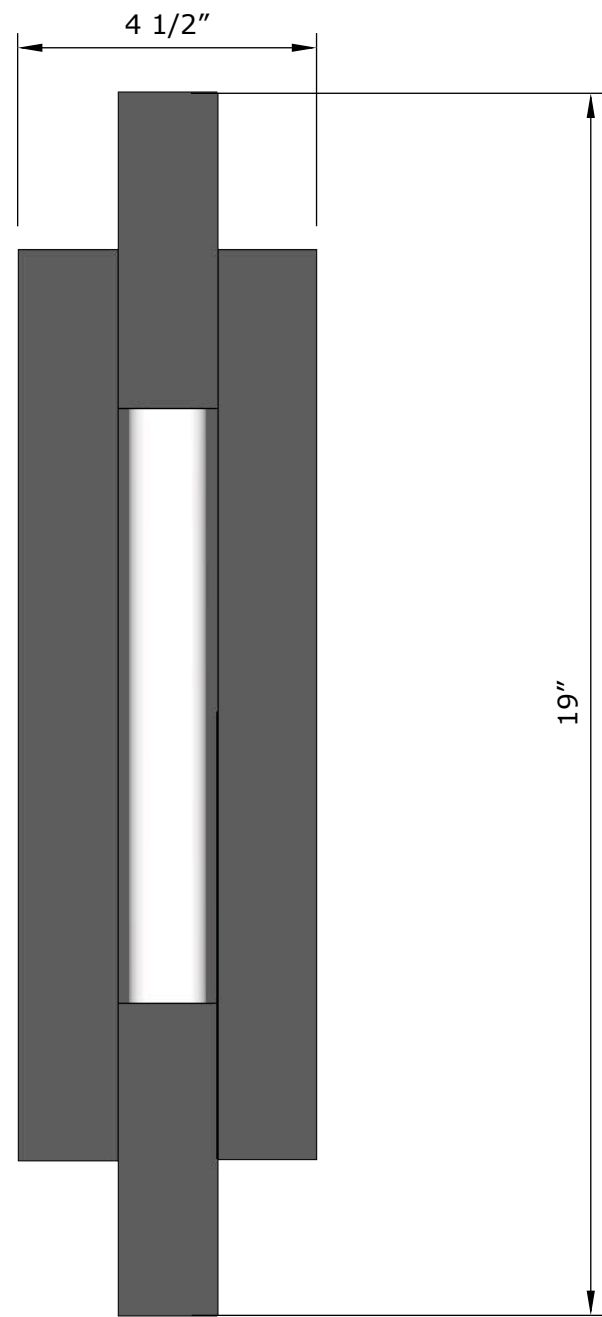


DAIKON

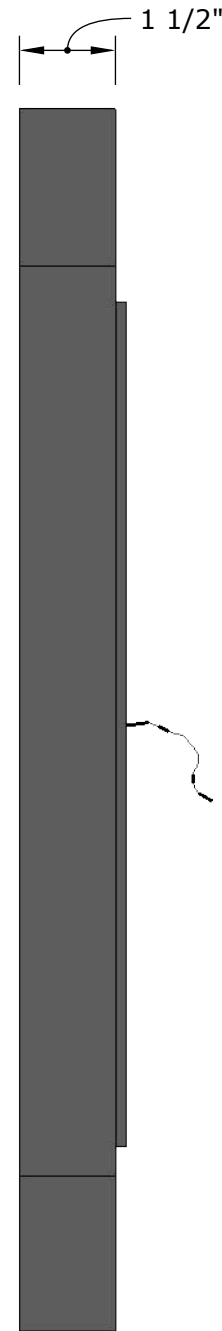
SHOJI | SCONCE

CUT SHEET | SCALE: 1: 2

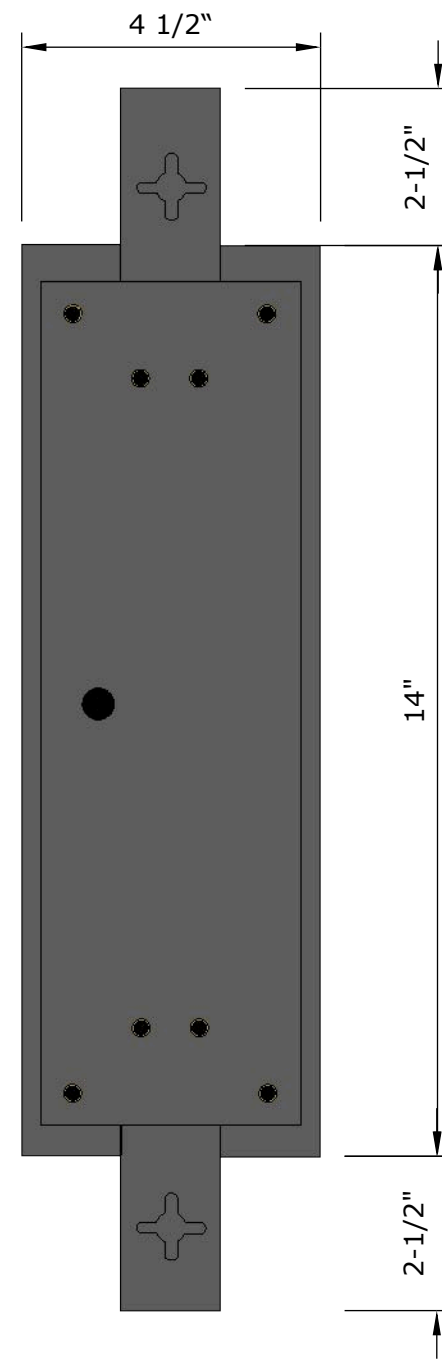
FRONT



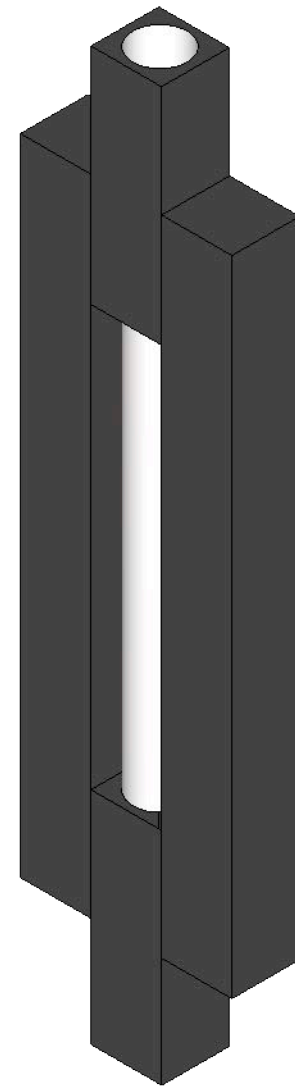
SIDE



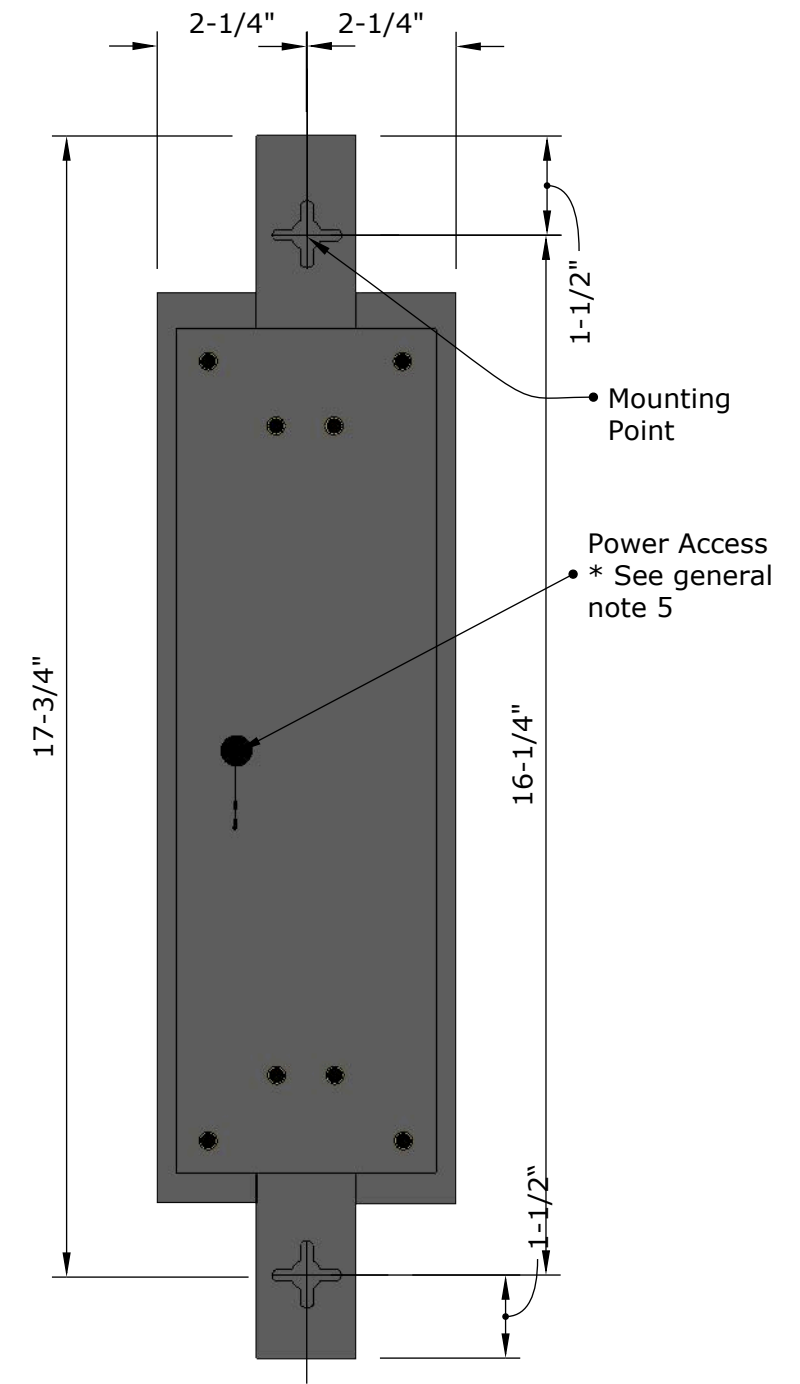
BACK



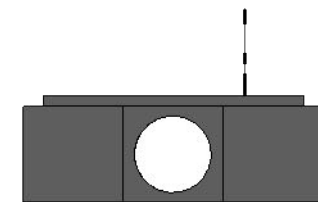
OBLIQUE



MOUNTING DETAIL



TOP



DAIKON SHOJI | SCENCE

CUT SHEET | SCALE: 1: 4