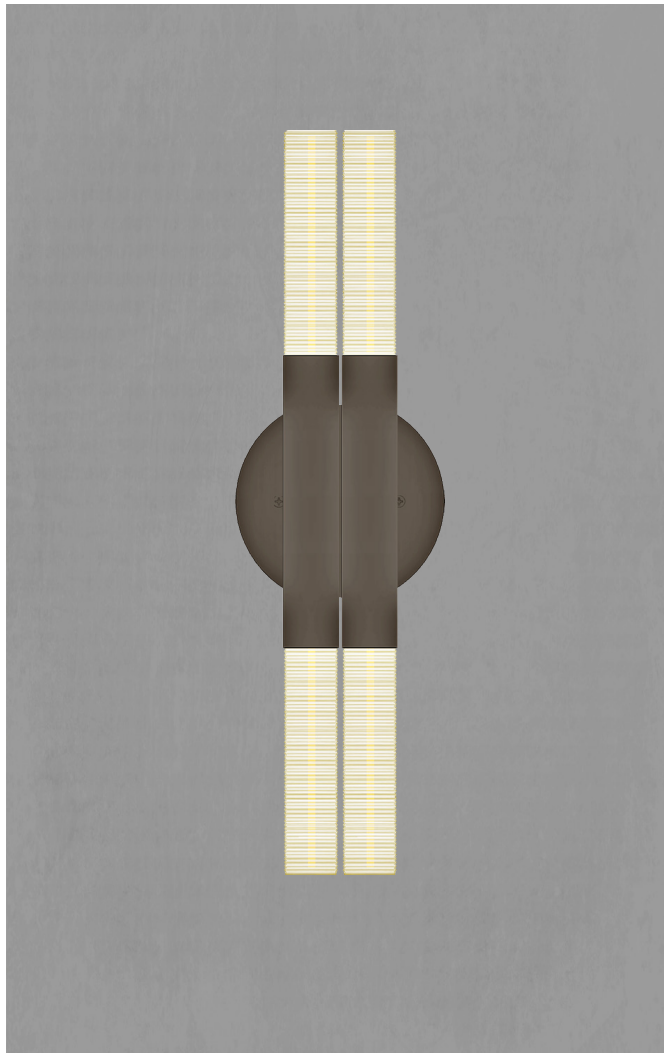


visually sensitive lighting solutions

**FIXTURE**

MATERIALS

DIMENSIONS

LAMPING

VOLTAGE

UL LISTED

**FINISH**

STAINLESS

BRASS

**POST KOKO SCONCE**

STAINLESS STEEL, BRASS

19.75 H x 5.5 W x 2.25 D

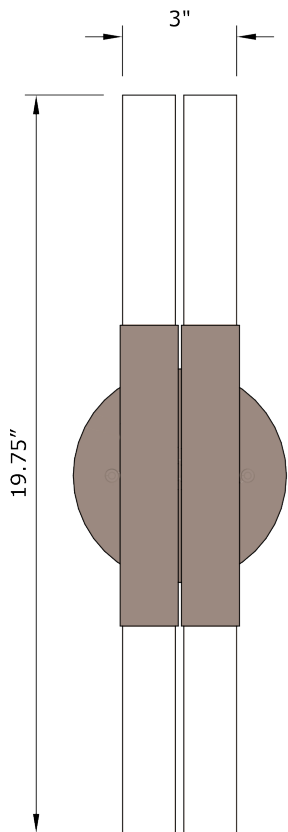
E26 dimmable LED  
2200/2700/3000K

110-240

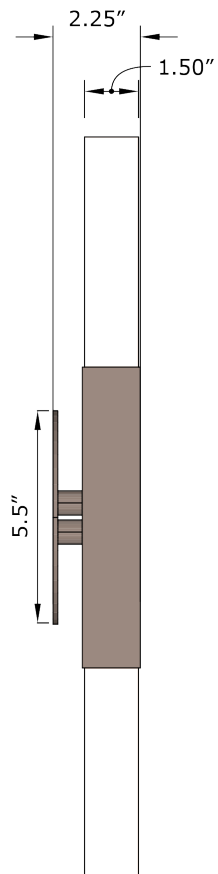
YES

SATIN WHITE, SATIN, GRAPHITE,  
ONYX WAX, SATIN BLACKBURNISHED, TONED, NAVAL,  
NATURAL, AGED, BRONZED

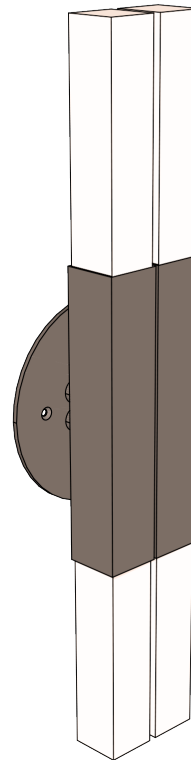
FRONT



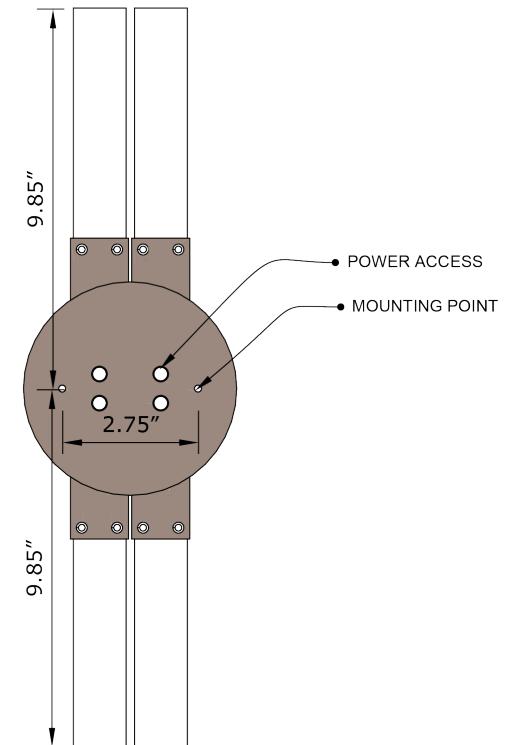
SIDE



OBLIQUE



MOUNTING DETAILS





**SATIN WHITE**  
WAXY NEUTRAL  
OPAQUE



**SATIN**  
NO PATINA, BURNISHED



**GRAPHITE**  
SILVER TO GRAY, BRUSHED  
TRANSLUCENT



**ONYX WAX**  
WAXY GRAY-BLACK, BURNISHED  
SEMI-TRANSLUCENT



**SATIN BLACK**  
WAXY DEEP BLACK  
OPAQUE



**BURNISHED BRASS**  
BLENDED PATINA, LIGHT VALUE - YELLOW-GOLD, RAW UMBER



**TONED BRASS**  
BLENDED PATINA, LIGHT VALUE - GOLD, CRIMSON BLUSH,  
RAW UMBER



**NAVAL BRASS**  
BRUSHED PATINA, MIDDLE VALUE -YELLOW-GOLD, RAW UMBER



**NATURAL BRASS**  
BLENDED PATINA, MIDDLE VALUE -GREEN-GOLD, RAW UMBER



**AGED BRASS**  
MOTTLED PATINA, HIGH CONTRAST - GOLD, COPPER,  
CRIMSON BLUSH, DARK UMBER



**BRONZED BRASS**  
SOLID PATINA, DARK VALUE - BLACK, UMBER, MUTED GOLD,  
HINTS OF COPPER AND BLUE-VIOLET